

Assignment 6, Part I:

name _____

Write first-species counterpoint above and below the given c.f. Write in the intervals between c.f. and counterpoint between the staves. Note the mode.

A musical staff system consisting of two staves. The top staff has a treble clef and is empty. The bottom staff has a bass clef and contains a single bass note (G2) in the first measure. The rest of the staff is empty.

A musical staff system consisting of two staves. The top staff has a bass clef and contains a single bass note (G2) in the first measure. The rest of the staff is empty. The bottom staff is empty.

Write first-species counterpoint above and below the given c.f. Write in the intervals between c.f. and counterpoint between the staves. Note the mode.

A musical staff with a treble clef. The first measure contains a single bass note on the second line (F4). The rest of the staff is empty.

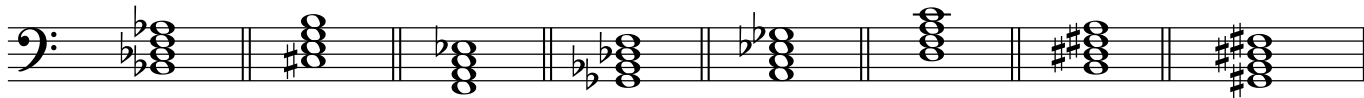
A musical staff with a bass clef. The first measure contains a single bass note on the second line (F3). The rest of the staff is empty.

Assignment 6, Part II: Seventh Chords

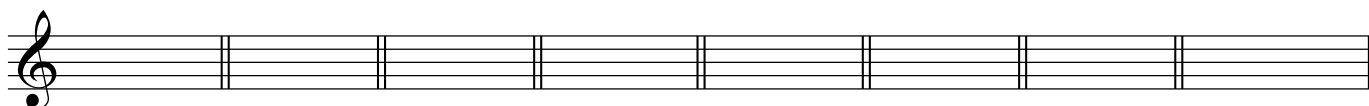
name _____

When asked to *identify* seventh chords, please use the dual-appellation method (i.e., MM, Mm, mm, dm, dd).

1. Identify these seventh chords.

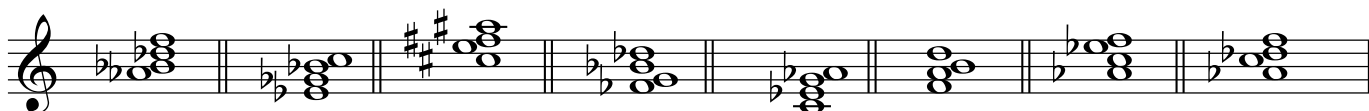


2. Write seventh chords according to the major key and roman numeral given, and identify each.

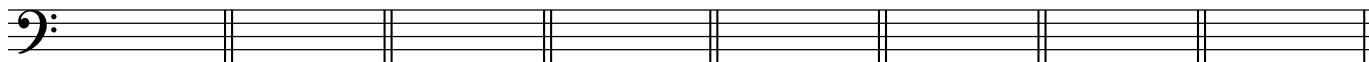


A: ii⁷ F#: IV⁷ Bb: vi⁷ Eb: iii⁷ Db: I⁷ E: vii⁷ Gb: V⁷ B: vi⁷

3. Indicate the root of each seventh chord, its figured-bass symbol, and identify its type.



4. Write the indicated chords (all keys are major), and identify each.



Ab: IV⁶₅ G: ii⁴₃ E: vii⁴₂ A: vi⁶₅ F: ii⁴₃ D: vii⁴₂ F#: ii⁶₅ Bb: vi⁴₃
